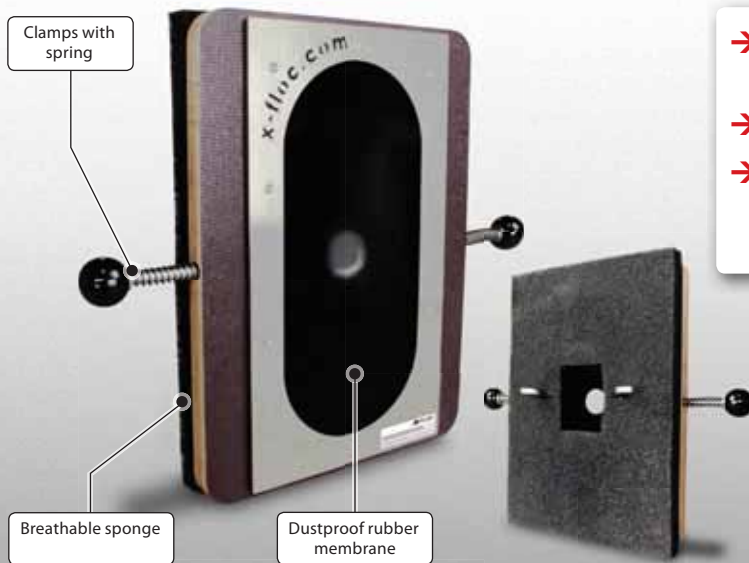
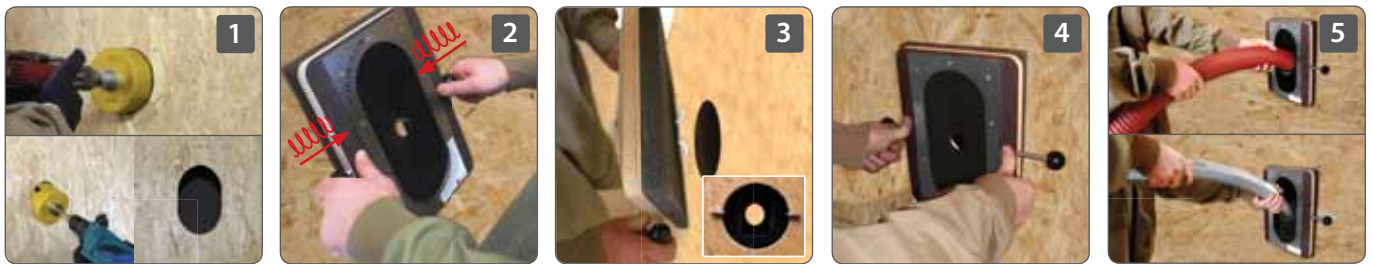


Universal injection bezel



- ➔ Practical injection bezel with clamps for fixation
- ➔ Hands-free for the injection tool
- ➔ Self-sealing to the cavity board by flexible sealing sponge and by rubber membrane at the injection bezel

Function



1 Drill a hole 85...120 mm.

2 Pretension clamping lever.

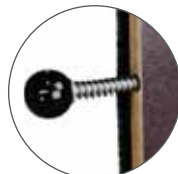
3 Insert the injection bezel into the injection hole...

4 ...and let it snap in by counter-pressure.

5 Insert injection tool.

The universal injection bezel is a handy tubing port for fastening in the drill hole by clamps. Due to the clamping mechanism, the injection bezel can be easily fixed in a drill hole or long hole.

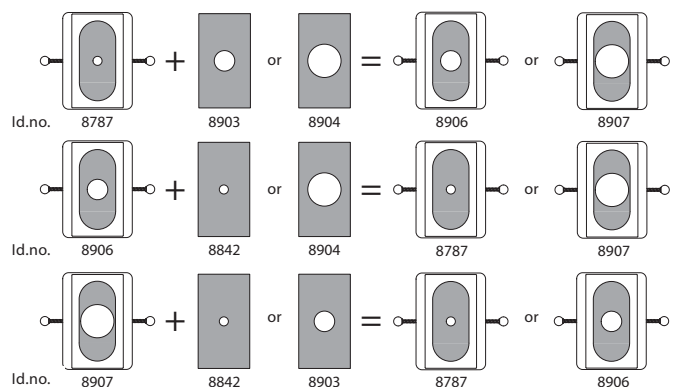
The practical injection bezel enables to have the hands free for the work with the injection tool.



Clamps with spring

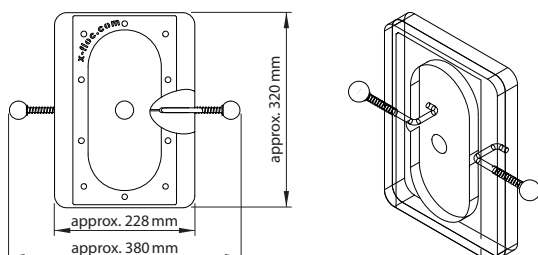
Variants of the injection bezel:

The injection bezel is available with 3 different rubber membranes which can be exchanged within a few steps.



Technical data

- ▶ Can be used with panelling depth $s = 12 - 22$ mm
- ▶ Required drill hole or long hole $\varnothing = 85 - 120$ mm
- ▶ Diameter through hole of the rubber membrane:
 - $D = 30 \dots 60$ mm (Prod.No. 8787)
 - $D = 45 \dots 70$ mm (Prod.No. 8906)
 - $D = 65 \dots 100$ mm (Prod.No. 8907)
- ▶ Weight: approx. 1,46 kg
- ▶ Dimensions:



Suitable for the following injection tools:

- ▶ Insulating Needle
- ▶ Injection Hose
- ▶ Injection Lence
- ▶ Injection Nozzle
- ▶ Rotary Nozzle

