

Injection bezel universal

The injection bezel **art.no. 9209** or **art.no. 9657** is suitable for almost all injection tools, e. g.

- ▶ injection/conveying hoses
- ▶ injection needles
- ▶ injection lances
- ▶ injection and rotary nozzles

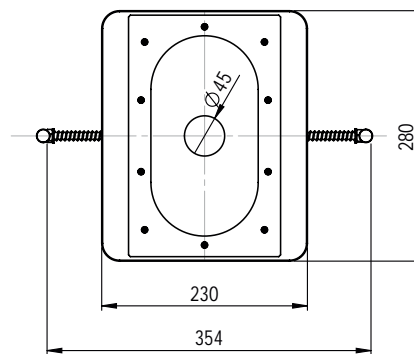
The injection bezel universal is fixed in the drill hole or long hole with the help of the clamping mechanism (clamping bracket with spring) and it is self-sealing. This leaves the professional's hands free to guide the injection tool and operate the machine control.

An extremely tear-resistant rubber membrane reliably seals against both smooth surfaces (e.g. injection needles) and hoses (e.g. injection or conveying hose). Excess air that enters the compartment during injection can escape easily thanks to the air-permeable sealing sponge. The sponge also compensates for different planking thicknesses.

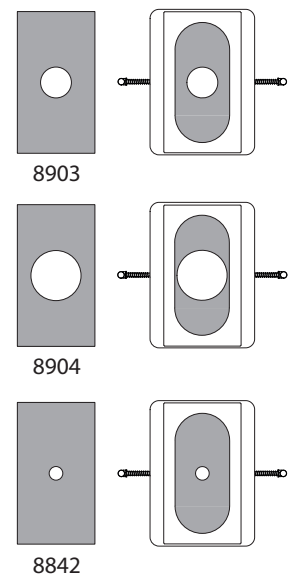


The advantages/features at a glance

- ▶ **Art.no. 9209** for planking thickness 12...25mm
- ▶ **Art.no. 9657** for planking thickness 30...80mm
incl. 2x sealing sponge art.no. 9077 (15mm)
and 2x sealing sponge art.no. 9661 (25mm)
- ▶ Required drill hole or long hole \varnothing 95 bis 120mm
- ▶ Rubber membrane for sealing the injection bezel
Art.no. 8903 Seal \varnothing = 45mm (Standard)
Art.no. 8904 Seal \varnothing = 68mm (optional)
Art.no. 8842 Seal \varnothing = 30mm (optional)
Please specify optional design when ordering.
- ▶ Dimensions of injection bezel:
230 x 280mm or incl. bracket handles 354 x 280mm



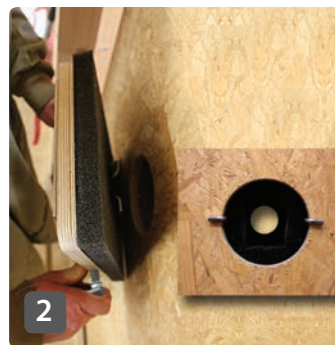
Membrane:



Application:



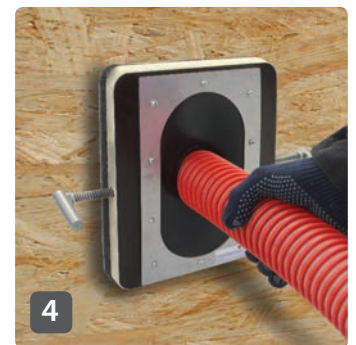
1 Pretension clamping lever



2 Insert the injection bezel into the opening



3 Engage by applying counterpressure



4 Insert the blowing tool