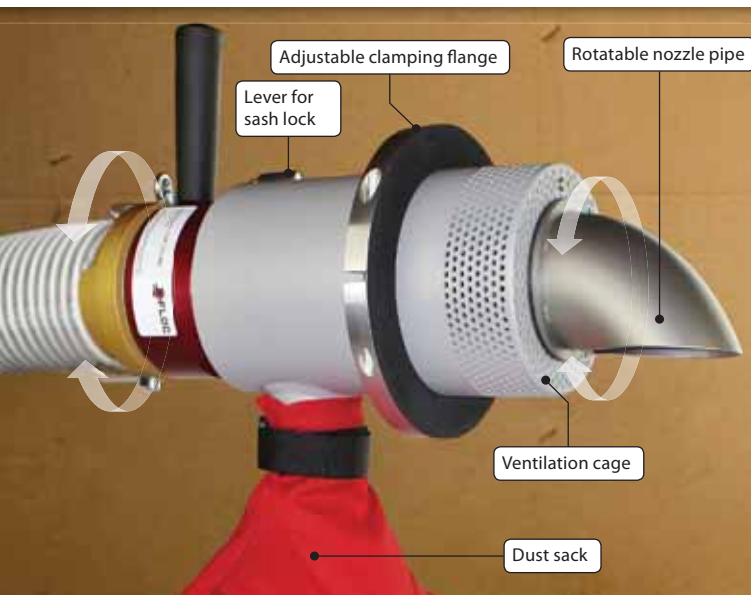


# J-Jet: High Throughput and Dust-free Ventilated Rotary Nozzle with Adjustable Clamping Flange



www.x-floc.com



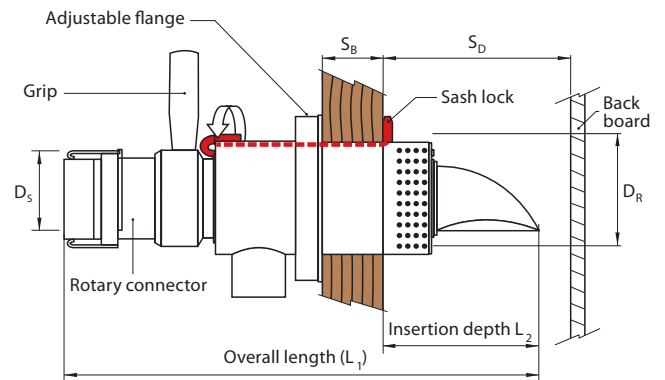
J-Jet 75>60  
Prod.no. 3795



J-Jet 75>75  
Prod.no. 8477

- ➔ Reduces the risk of deformation by ventilation
- ➔ Economical by saving of time
- ➔ Effort-saving operation
- ➔ Dust-free process
- ➔ Fixation with simple sash lock
- ➔ Adjustable clamping flange for different board thicknesses

Ventilated rotary nozzles can fill stud wall constructions with insulation material and conduct excess air controlled. In this process the insulation material flowing with the injection air is accelerated by inflow in the rotary nozzle. Afterwards it is passed with the nozzle pipe parallel to the stud cavity layer. Arrived at the top the installer turns the nozzle pipe with the grip in the right stud cavity corner. The excess air is ventilated through the perforated sheet metal cage in the dust sack. Thereby dust emissions can be reduced to a minimum while injecting.



## Technical Data

	J-Jet 75>60	J-Jet 75>75
Nozzle outlet	angled	angled
Passive ventilation	•	•
Active ventilation	•	•
Insulation thickness [S <sub>D</sub> ]	145 ... 350mm	145 ... 600mm
Board thickness [S <sub>B</sub> ]	10...75 mm	10...75 mm
Adjustable flange	•	•
Overall length L <sub>1</sub>	426 mm	465 mm
Insertion depth L <sub>2</sub>	145 mm	145 mm
Hose connection D <sub>s</sub>	NW75 (3")	NW75 (3")
Drill hole required Ø D <sub>R</sub> [mm]	105...115 mm	105...115 mm
Product number	3795	8477

## Accessories

	Description	Prod. No.
	Pro hole saw Ø 106,5 mm	6182
	Hole saw Ø 106,5 mm with ejection system; HSS/SDS available.	4966
	Hole saw HF 106,5 mm wood fibre panel	5917
	Sealing corks 106 mm cone-shaped cork	1948
	Closing plugs 106 mm wood fibre	8950

