

Injection Bezel

Category 04 | Nozzles and blowing equipment



X-Floc's **Injection Bezel** supports the insulation blowing specialist to install loose insulation material in wall and ceiling structures and formwork with battens, which were attached by vapour barrier and air sealing strips.

It is very easy to put the **Injection Bezel** behind the battens. Insert the hose, just by cutting a hole in the centre of the bezel with a knife.

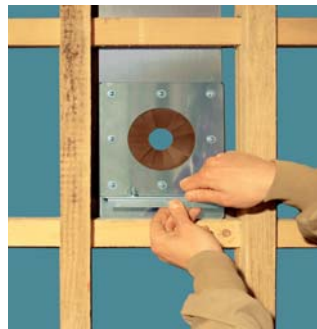
An adjustable bracket prevents the vapour barrier from damage while inserting the hose through the flexible rosette.

The flexible rubber-rosette encloses hoses of in diameters from 50 to 75 mm, allowing dustless work. Dust emissions and torn blowing holes is a thing of the past.

Easy made position changes: It's very easy and fast to change the position of the X-Floc **Injection Bezel**. Thus you save time.



Placement between the battens



Positioning the stop rail



Manufacture of blowing hole



Insertion of the injection hose

Injection Bezel, Aluminum panel with rubber-rosette for dust-tight insertion of the injection hose from 50 to 75 DN (Item-No. 2911)